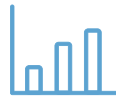


This report showcases some of our accomplishments over the past year as we strive to be the prominent health resource and care provider for the communities we serve. We are proud of all that our staff, providers, volunteers and donors have achieved, and we will continue to seek ways to advance our people, organization and greater community.



32 newly recruited
PHYSICIANS
IN 24 MONTHS



11,732
PATIENTS DISCHARGED



125 volunteers
DONATED
12,000 HOURS



1,549
Full-time Equivalent
EMPLOYEES



1,323
BIRTHS



9,148
SURGERIES



\$133 MILLION
SALARIES, WAGES AND BENEFITS PAID
(per YE19 financial statements)



\$22.4 MILLION
UNCOMPENSATED CARE PAID



66,369
EMERGENCY DEPARTMENT VISITS



EDUCATION ASSISTANCE
& SCHOLARSHIPS

\$128,000

51 NURSING
residents hired

46 Campbell medical
STUDENTS



THE LEAPFROGGROUP



Wayne UNC Health Care earned a safety grade of A from The Leapfrog Group, a nationally recognized hospital rating organization. This marks the third consecutive time the health system earned The Leapfrog Group's highest rating, placing it among the top 33% of systems in the country.



READMISSION
PREVENTION

Health ConNEXTion is a program that provides home visits to patients with congestive heart failure, pneumonia and COPD who frequently visit the hospital. The program helps reduce hospital readmissions by following up with patients after their discharge to provide education, reconcile medications, conduct safety assessments and connect patients to care providers.

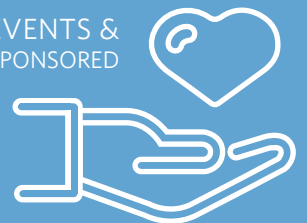


Wayne Community College
PARTNERSHIP AWARD

The American Association of Community Colleges awarded Wayne UNC Health Care the Outstanding College/Corporate Partnership Award for its strategic partnership with Wayne Community College. Working together, the two organizations are closing local gaps in education and training and bringing talented health care professionals to the community.

35 COMMUNITY EVENTS &
ORGANIZATIONS SPONSORED

VALUE
\$130,000





WAYNE ACTION TEAMS FOR COMMUNITY HEALTH (WATCH)

WATCH provides primary and acute care to uninsured residents of Wayne County from three locations: a mobile unit, the Goldsboro Family YMCA and the Wayne UNC Health Care campus.

\$5.5 MILLION

COST OF FREE PRIMARY CARE
(includes provider visits, labs and prescriptions)

One in nine Wayne County residents have been a patient at WATCH since the program's inception in 2000.



CORPORATE HEALTH SERVICES

Wayne UNC Health Care Corporate Health Services provides care right at the jobsite.

14 CORPORATE CLIENTS | 18,000 PATIENTS

1,540 VACCINES PROVIDED

1,412 SCREENINGS COMPLETED

1,064 INDIVIDUALS TRAINED & CERTIFIED



SCHOOL HEALTH

The Wayne UNC Health Care School Nurse Program improves the health and wellness of school children.

33 SCHOOLS | 21 NURSES

18,000+ STUDENTS COVERED

23,071 VISITS

VISION SCREENINGS

6,079

876 referred to the eye doctor; care secured for 90% of those referred

DENTAL SCREENING FOLLOW UP 526

students with a 76% secured care rate

HEARING SCREENING FOLLOW UP 60

students with a 100% secured care rate



WAYNE INITIATIVE FOR SCHOOL HEALTH (WISH)

A state-wide model for school-based care, Wayne Initiative for School Health (WISH) is a partnership of Wayne UNC Health Care, Goldsboro Pediatrics, Wayne County Public Schools and Wayne County Health Department. WISH operates health centers in six local middle and high schools. WISH centers are staffed with Nurse Practitioners, Registered Nurses, and Office Assistants who work alongside Registered Dietitians, Health Educators, Pediatricians, and Mental Health Providers.

6 HEALTH CENTERS OPERATED

16,441 VISITS | 2,746 STUDENTS ENROLLED



WHEN *We* GET BETTER, *You* GET BETTER.

For more information, visit wayneunc.org.